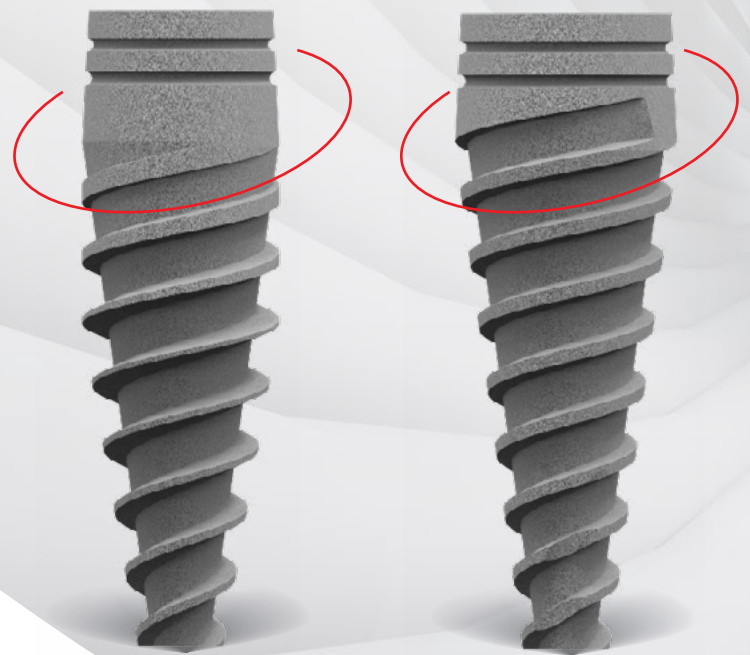




**GLOBALWIN**  
IMPLANT SYSTEM

# SLIM IMPLANTS 2.9 AND 3.3



**THE MOST ADAPTABLE  
IMPLANTS YET.**

**BIOSAFIN**

PARTNER OF



Making Your Life Better.

## GLOBALWIN UNIQUE SURGICAL KIT

The GLOBALWIN Implant System – including the 2.9mm SLIM implant and the 3.3mm implant – may be managed with a single Surgical Kit, inside which the drills and all the instruments necessary for the surgical and prosthetic stage are placed logically and clearly according to sequence of use.

GLOBALWIN SLIM implants need a driver, which is available to purchase separately. SLIM Implants have a dedicated range of prosthetic solutions.



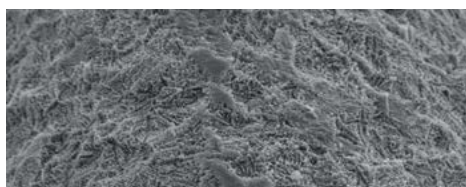
**SINCE 2005, OVER 15 YEARS  
OF CONTINUOUS CLINICAL  
APPLICATION.**

## MICRO ROUGH SURFACE APPLIED TO ALL GLOBALWIN SYSTEM IMPLANTS

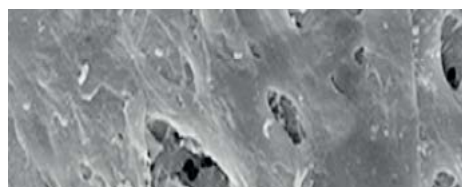
The Micro Rough Surface has a rough morphology, obtained by the subtractive processes of sandblasting and acid-etching directly onto the titanium implant surface.

The special three-dimensional geometry of its microstructure allows a reduction in the time required for osseointegration, through a process of osteoconduction promoted by the distinctive scaffold characteristics of this surface.

The regularity of the roughness and the characteristics of MRS promote a greater bone-to-implant contact surface, improving the quality and quantity of bone around the implant and ensuring optimum osseointegration.



MAG 721x: regularity of the MRS surface



Bone in the active remodelling phase on the MRS surface

### BIBLIOGRAPHICAL REFERENCES:

- Macroscopic and Microscopic evaluation of a new implant design supporting immediately loaded full arch rehabilitation - S.Tetè, V.Zizzari, A.De Carlo, B.Sinjari, E.F.Gherlone *Annali di Stomatologia* Vol.3, n.2 - 2012
- Influence of Novel Nano - Titanium Implant Surface on Human Osteoblast Behaviour and Growth - S. Tetè, F.Mastrangelo, R.Quaresima, R.Vinci, G.Sammartino, L.Stuppia, Enrico F. Gherlone - *Implant Dentistry* Vol.19, n.26 - 2010
- Isolation of osteogenic progenitors from human amniotic fluid using a single step culture protocol - I. Antonucci, I. Iezzi, E. Morizio, F. Mastrangelo, A. Pantalone, M. Mattioli Belmonte, A. Gigante, V. Salini, G. Calabrese, S. Tetè, G. Palka, L. Stuppia - *SILENCE a Journal of RNA regulation* - 2009
- In vitro behaviour onto different titanium surfaces of osteoblast-like cells obtained from human dental pulp - S. Tetè, F. Mastrangelo, V. Zizzari, G. D'Apolito, N. Fiorentino, U. Desiato, M.T. Sberna, R. Quaresima, L. Stuppia, R. Vinci, E.F. Gherlone - *Atti del 7th Annual Meeting of ISSCR International Society of Stem Cell Research, Barcelona, July 2009*
- Novel Protocol of Osteogenic differentiation from amniotic fluid cells  
S. Tetè, F. Mastrangelo, M. Tranasi, V. Zizzari, I. Antonucci, G. D'Apolito,  
T. Marchese, R. Vinci, L. Stuppia, E.F. Gherlone - *Atti del 7th Annual Meeting of ISSCR International Society of Stem Cell Research, Barcelona, July 2009*
- Interfaccia osso - impianto nei differenti tipi di carico degli impianti dentali  
S. Tetè, G. D'Apolito, F. Mastrangelo, R. Vinci, E.F. Gherlone - *Atti del III Expo di Autunno, Università della Lombardia, 27 - 28 Novembre 2009*
- Valutazione della capacità osteogenetica di hafsacs ottenute da liquido amniotico - S. Tetè, U. Di Tore, V. Zizzari, L. Stuppia, F. Zarone, E.F. Gherlone - *Atti del III Expo di Autunno, Università della Lombardia, 27 - 28 Novembre 2009*



## SLIM IMPLANT 2.9 AND 3.3

GLOBALWIN SLIM 2.9 and 3.3 implants with SLIM internal hex connection extends and completes the GLOBALWIN Line of Implants, to meet the needs of Dentists for implant placement in very narrow anatomical spaces. These implants are only indicated for the mandibular central and lateral incisors and maxillary lateral incisors.

### Micro- and macro-morphology in perfect harmony

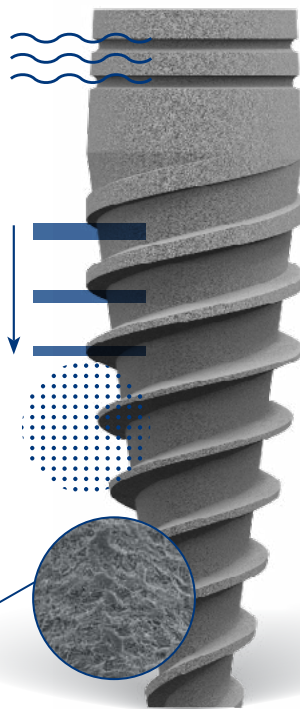
**Neck with micro-grooves**  
to lighten the stress at the crestal level.

**Gradual-depth threads**  
ensure maximum stability even with immediate-loading techniques.

**Truncated cone shape**  
with tapered apex, to facilitate insertion of the implant and ensure maximum stability in different bone types.

**MRS Micro Rough Surface**  
sandblasted and etched, the gold standard of osteoconductive surfaces. Clinical follow-up since 2005.

**Sharp apex**  
for easier implant insertion.



### SLIM internal hex connection with Free Lock technology

**Prosthetic platform**  
available in all major CAD/CAM libraries.

**Innovative prosthetic solutions**  
adapted for digital processes.



- Used since 1995.
- Helps achieve great connection stability

GLOBALWIN SLIM implants are one of the smallest on the market and thanks to the internal connection with Free Lock technology, used since 1995, they provide excellent stability and load resistance.

Its cylindrical shape, with a self-tapping conical apex, MRS surface and microgrooved neck make it a high-performance implant.

- Ø 1.40 mm in implant 2.9
- Ø 1.50 mm in implant 3.3

## FULL RANGE

### SLIM Implants

**SLIM CONNECTION**



- 29010GSI/MRS
- 29115GSI/MRS
- 29013GSI/MRS
- 29015GSI/MRS



- 33010GSI/MRS
- 33115GSI/MRS
- 33013GSI/MRS
- 33015GSI/MRS

### DIAMETERS AND HEIGHTS

Ø 2.9	Ø 3.3
h 10	h 10
h 11.5	h 11.5
h 13	h 13
h 15	h 15

# MAIN PROSTHETICS INSTRUMENTS AND ACCESSORIES

<p><b>INSTRUMENT FOR EXTRACTION OF THE IMPLANT FROM THE AMPOULE</b></p>  <p>62LSI</p>	<p><b>SCREWDRIVERS</b></p> <p>manual screwdriver Code 62Sc Code 62Mc Code 62Lc</p> <p>contra-angle screwdriver Code 99Sc Code 99Mc Code 99Lc</p>	<p><b>COVER SCREWS</b> in titanium</p>  <ul style="list-style-type: none"> <li>● VT29SI</li> <li>○ VT33SI</li> </ul>	<p><b>FLARED HEALING CAPS</b> in titanium</p>  <p>3.3mm</p> <ul style="list-style-type: none"> <li>● VG292SI</li> <li>● VG293SI</li> <li>● VG295SI</li> <li>● VG297SI</li> <li>○ VG332SI</li> <li>○ VG333SI</li> <li>○ VG335SI</li> <li>○ VG337SI</li> </ul> <p>GH 2mm GH 3mm GH 5mm GH 7mm</p>	
<p><b>TITANIUM, FLARED IMPRESSION COPINGS</b> VMILSI screw included</p>  <ul style="list-style-type: none"> <li>● IMG29LSI</li> <li>○ IMG33LSI</li> </ul>	<p><b>WINSKAN ABUTMENT IN PEEK FOR SLIM Ø 2.9 AND Ø 3 IMPLANTS**</b> Impression copings or digital scans VP2SI included</p>  <p>Scan Abutment</p> <ul style="list-style-type: none"> <li>● WS29HSI</li> </ul>	<p><b>ANALOGUES</b> in titanium</p> <p>Standard analogue</p> <ul style="list-style-type: none"> <li>● A29SI</li> <li>○ A33SI</li> </ul> <p>Digital analogue** WDAV screw included</p> <ul style="list-style-type: none"> <li>● WDA29SI</li> <li>○ WDA33SI</li> </ul>	<p><b>STRAIGHT ABUTMENTS FOR TEMPORARY DENTAL WORK</b></p>  <p>in titanium, VP2SI prosthetic screw included</p> <ul style="list-style-type: none"> <li>● MP2901SI</li> <li>● MP2902SI</li> <li>● MP2903SI</li> <li>○ MP3301SI</li> <li>○ MP3302SI</li> <li>○ MP3303SI</li> </ul> <p>GH 1mm GH 2mm GH 3mm</p>	
<p><b>ABUTMENTS FOR DRILLING</b> in titanium, VP2SI prosthetic screw included</p>  <ul style="list-style-type: none"> <li>● MF2900SI</li> <li>○ MF3300SI</li> </ul>	<p><b>STRAIGHT ABUTMENTS</b> in titanium, VP2SI prosthetic screw included</p>  <ul style="list-style-type: none"> <li>● MD2901SI GH 1mm</li> <li>● MD2902SI GH 2mm</li> <li>● MD2903SI GH 3mm</li> <li>○ MD3301SI GH 1mm</li> <li>○ MD3302SI GH 2mm</li> <li>○ MD3303SI GH 3mm</li> </ul>	<p><b>FLAT SHIFT ABUTMENTS</b> in titanium, VFS prosthetic screw included</p>  <ul style="list-style-type: none"> <li>○ MFS333SI GH 3mm</li> <li>○ MFS334SI GH 4mm</li> <li>○ MFS335SI GH 5mm</li> </ul>	<p><b>ROTATIONAL CYLINDRICAL DIRECT ABUTMENT</b> in titanium, VP2SI prosthetic screw included</p>  <ul style="list-style-type: none"> <li>○ MDC331SI GH 1mm</li> <li>○ MDC332SI GH 2mm</li> <li>○ MDC333SI GH 3mm</li> </ul>	
<p><b>FLAT SHIFT ROTATIONAL CASTABLE DIRECT ABUTMENT</b> in PMMA; VP2SI prosthetic screw included</p>  <p>MDF331SI GH 1mm</p>	<p><b>15° ANGLED ABUTMENTS</b> in titanium, VP2SI prosthetic screw included</p>  <ul style="list-style-type: none"> <li>● MIN29151SI GH 1mm</li> <li>● MIN29152SI GH 2mm</li> <li>● MIN29153SI GH 3mm</li> <li>○ MIN33151SI GH 1mm</li> <li>○ MIN33152SI GH 2mm</li> <li>○ MIN33153SI GH 3mm</li> </ul>	<p><b>25° ANGLED ABUTMENT</b> in titanium, VP2SI prosthetic screw included</p>  <ul style="list-style-type: none"> <li>○ MIN33251SI GH 1mm</li> <li>○ MIN33252SI GH 2mm</li> <li>○ MIN33253SI GH 3mm</li> </ul>	<p><b>STRAIGHT AESTHETIC ABUTMENTS</b> in titanium; VP2SI prosthetic screw included</p>  <ul style="list-style-type: none"> <li>● WE29001SI GH 1mm</li> <li>● WE29002SI GH 2mm</li> <li>● WE29003SI GH 3mm</li> <li>○ WE33001SI GH 1mm</li> <li>○ WE33002SI GH 2mm</li> <li>○ WE33003SI GH 3mm</li> </ul>	
<p><b>15° ANGLED AESTHETIC ABUTMENTS</b> in titanium; VP2SI prosthetic screw included</p>  <ul style="list-style-type: none"> <li>● WE29151SI GH 1mm</li> <li>● WE29152SI GH 2mm</li> <li>● WE29153SI GH 3mm</li> <li>○ WE33151SI GH 1mm</li> <li>○ WE33152SI GH 2mm</li> <li>○ WE33153SI GH 3mm</li> </ul>	<p><b>25° ANGLED AESTHETIC ABUTMENT</b> in titanium, VP2SI prosthetic screw included</p>  <ul style="list-style-type: none"> <li>○ WE33251SI GH 1mm</li> <li>○ WE33252SI GH 2mm</li> <li>○ WE33253SI GH 3mm</li> </ul>	<p><b>WINBASE ABUTMENTS**</b> in titanium, for single screw-retained CAD/CAM prosthesis, VP2SI prosthetic screw included</p>  <ul style="list-style-type: none"> <li>● WB2901SI GH 1mm</li> <li>● WB2902SI GH 2mm</li> <li>● WB2903SI GH 3mm</li> <li>○ WB3301SI GH 1mm</li> <li>○ WB3302SI GH 2mm</li> <li>○ WB3303SI GH 3mm</li> </ul>	<p><b>ROTATIONAL RETENTIVE FLARED DIRECT ABUTMENT FOR WELDING</b> VP2SI prosthetic screw included</p>  <ul style="list-style-type: none"> <li>○ MDS331WRSI GH 1mm</li> <li>○ MDS332WRSI GH 2mm</li> <li>○ MDS333WRSI GH 3mm</li> </ul>	
<p><b>PREMILLED ABUTMENTS**</b> PREMILLED SLIM in titanium, VP2SI prosthetic screw included</p>  <p>WPM10MSI 10 mm. -Slim Internal Hex Connection Attachment M</p>  <p>WPM12MSI 12 mm. -Slim Internal Hex Connection Attachment M</p>		<p><b>BALL ATTACHMENT</b> <i>including:</i> Retentive O-ring and Box in titanium, Ø 2.1 mm ball to be tightened with instruments HMBLT</p>  <ul style="list-style-type: none"> <li>○ MOR331SI GH 1mm</li> <li>○ MOR332SI GH 2mm</li> <li>○ MOR333SI GH 3mm</li> <li>○ MOR334SI GH 4mm</li> <li>○ MOR335SI GH 5mm</li> </ul>	<p><b>STRAIGHT EA ABUTMENTS</b> in titanium, pre-assembled Mounter included torque to 30 Ncm*</p>  <ul style="list-style-type: none"> <li>○ EA33001SI GH 1mm</li> <li>○ EA33002SI GH 2mm</li> <li>○ EA33003SI GH 3mm</li> <li>○ EA33004SI GH 4mm</li> <li>○ EA33005SI GH 5mm</li> </ul>	
<p><b>17° EA ANGLED ABUTMENT</b> in titanium, pre-assembled Mounter included torque to 30 Ncm*</p>  <ul style="list-style-type: none"> <li>○ EA33172SI GH 2mm VP3SI prosthetic screw included</li> <li>○ EA33173SI GH 3mm</li> <li>○ EA33174SI GH 4mm VP2SI prosthetic screw included</li> </ul>	<p><b>30° EA ANGLED ABUTMENT</b> in titanium, pre-assembled Mounter included torque to 30 Ncm* VP2SI prosthetic screw</p>  <ul style="list-style-type: none"> <li>○ EA33304SI GH 4mm</li> <li>○ EA33305SI GH 5mm</li> </ul>	<p><b>ABUTMENTS FOR OVERCASTING</b> in chrome cobalt; VP2SI prosthetic screw included</p>  <ul style="list-style-type: none"> <li>● CR29SI</li> <li>○ CR33SI</li> </ul>	<p><b>PROSTHETIC SCREW FOR IMPLANT</b></p>  <p>VP2SI VP3SI</p>	<p><b>PROSTHETIC SCREW FOR FLAT SHIFT</b></p>  <p>VFS</p>
			<p><b>SCREWS FOR TRANSFER</b></p>  <p>VMILSI</p>	<p><b>HEX SCREWDRIVER</b></p> 

\*For prosthetic accessories, see the GLOBALWIN catalogue at: [www.globalwin.eu](http://www.globalwin.eu)

\*\* It is possible to download libraries from the website: [www.globalwin.eu](http://www.globalwin.eu)



## SPECIALIST COMPANY

## ITALIAN ENGINEERING, TECHNOLOGY AND RESEARCH IN DENTISTRY

GLOBALWIN is the result of years of experience and expertise from BIOSAFIN, an Italian company that has been operating in the dental implant market since 2006, having firmly established itself and becoming a key player in the industry.

It has always been BIOSAFIN's policy to strive for quality and professional ethics where both dentists and patients are concerned, as well as professionalism and accountability to its partners.

Our manufacturing processes and business management are certified and subject to ongoing review, in order to maintain a high standard of manufacturing and the highest level of service provision.

### TRADEMARKS

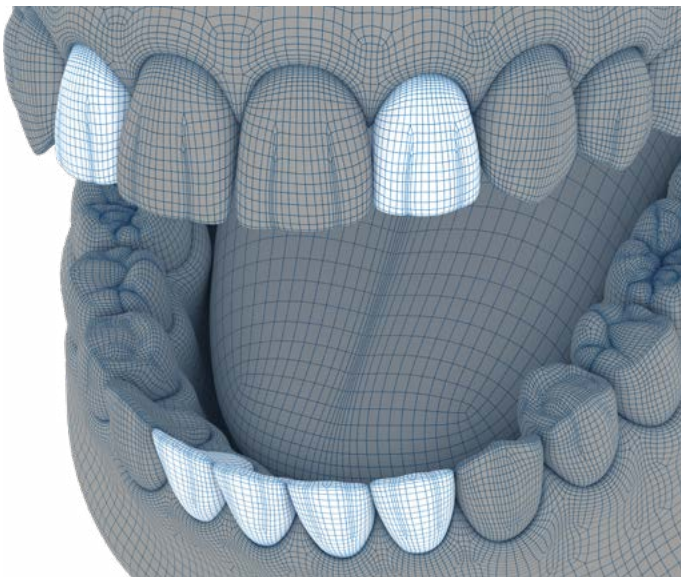
- GLOBALWIN®
- MRS Micro Rough Surface®



### PATENTS REGISTERED

- Trumpet abutment: patent no. EP 3424460
- CAB - Clip Abutment Bar:  
European Patent 114 250327  
International Patent PCT/EP2011/072448

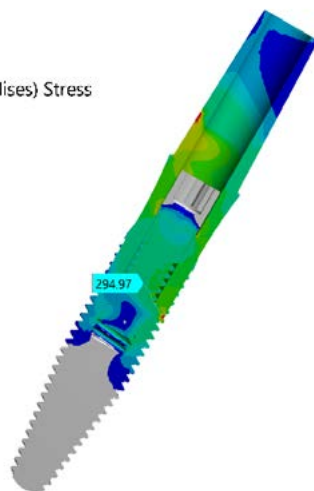
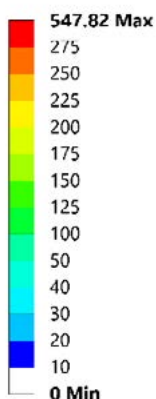
## GLOBALWIN SLIM INDICATIONS FOR IMPLANTS 2.9 AND 3.3



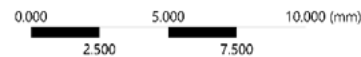
- for central and lateral mandibular incisors and maxillary lateral incisors
- for very limited interproximal spaces
- to avoid bone regeneration techniques
- in case of orthodontic therapies
- in case of thin ridges

### A: Static Structural

Equivalent Stress  
Type: Equivalent (von-Mises) Stress  
Unit: MPa  
Time: 1



Worst Case test carried out on a SLIM BIOSAFIN implant.



The test, carried out by simulating the WORST CASE of a BIOSAFIN SLIM 2.9 implant with the GH3 straight abutment (a condition that does not occur in clinical practice, thanks to the use of angled abutments), highlights the Von Mises stress performance, with a load of 500N, obtained with the Finite Element method.

The system amply meets the masticatory load levels for which it was designed.

PRODUCED BY:

**BIOSAF IN srl**

info@biosafin.com

www.biosafin.com

OFFICES IN ITALY:

**MILAN**

Via Cagliari 32/44  
20060 – Trezzano Rosa (MI)  
Zona Industriale  
Tel. +39 02 90968692  
Fax +39 02 90968541

**ANCONA:**

Via Tiraboschi, 36/G  
60131 - Ancona (AN)  
Tel. +39 071 2071897  
Fax +39 071 203261

CODE ED. 201 / ITA / V - 2024



**GLOBALWIN**

**I M P L A N T   S Y S T E M**

GLOBALWIN Medical devices are compliant with EC Directive 93/42 as amended

[www.globalwin.eu](http://www.globalwin.eu)

**BIOSAFIN**

PARTNER OF



Making Your Life Better.

BIOSAF IN is certified to:

**ISO 9001**, which certifies the entire work process, from start to finish, further demonstrating our compliance with quality standards considered optimal for the protection of product Users – Professionals – and end users – Patients.

**ISO 13485** specifically relevant to the quality of Medical Devices.

GLOBALWIN® is a registered trademark of BIOSAF IN - Italy