



GLOBALWIN
IMPLANT SYSTEM



100%
ITALY

**THE MOST ADAPTABLE
IMPLANTS YET.**

BIOSAFIN

Partner of



Making Your Life Better.

GLOBAL SOLUTION SIMPLY EFFECTIVE IN ANY CASE

GLOBALWIN implants are the synthesis of clinical and laboratory expertise, concentrated into one single device that optimally meets current Dentistry needs, combining the principles of ergonomics, surgical efficiency and prosthetic effectiveness into an intuitive and easy-to-use system.

- INTUITIVE USAGE
- VERSATILITY OF PROSTHETIC SOLUTIONS
- UNIVERSAL COMPATIBILITY
- SUCCESSFUL MRS SURFACE
- COMPLETE SOLUTION FOR THE MODERN DENTAL CLINIC



SURFACE: MICRO ROUGH SURFACE



SINCE 2009, OVER 10 YEARS OF CONTINUOUS CLINICAL APPLICATION.

THE MRS SURFACE HAS EXCELLENT OSTEOCONDUCTIVE PROPERTIES

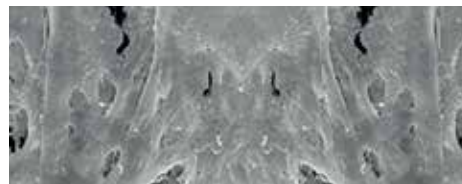
The Micro Rough Surface has a rough morphology, obtained by the subtractive processes of sandblasting and acid-etching directly onto the titanium implant surface.

The special three-dimensional geometry of its microstructure allows a reduction in the time required for osseointegration, through a process of osteoconduction promoted by the distinctive scaffold characteristics of this surface.

The regularity of the roughness and the characteristics of MRS promote a greater bone-to-implant contact surface, improving the quality and quantity of bone around the implant and ensuring optimum osseointegration.



MAG 721x: regularity of the MRS surface



Bone in the active remodelling phase on the MRS surface

BIBLIOGRAPHICAL REFERENCES:

Macroscopic and Microscopic evaluation of a new implant design supporting immediately loaded full arch rehabilitation - S.Tetè, V.Zizzari, A.De Carlo, B.Sinjari, E.F.Gherlone *Annali di Stomatologia* Vol.3, n.2 - 2012

Influence of Novel Nano - Titanium Implant Surface on Human Osteoblast Behaviour and Growth - S. Tetè, F.Mastrangelo, R.Quaresima, R.Vinci, G.Sammartino, L.Stuppia, Enrico F. Gherlone - *Implant Dentistry* Vol.19, n.26 - 2010

Isolation of osteogenic progenitors from human amniotic fluid using a single step culture protocol - I. Antonucci, I. Iezzi, E. Morizio, F. Mastrangelo, A. Pantalone, M. Mattioli Belmonte, A. Gigante, V. Salini, G. Calabrese, S. Tetè, G. Palka, L. Stuppia - *SILENCE a Journal of RNA regulation* - 2009

In vitro behaviour onto different titanium surfaces of osteoblast-like cells obtained from human dental pulp - S. Tetè, F. Mastrangelo, V. Zizzari, G. D'Apolito, N. Fiorentino, U. Desiato, M.T. Sberna, R. Quaresima, L. Stuppia, R. Vinci, E.F. Gherlone - *Atti del 7th Annual Meeting of ISSCR International Society of Stem Cell Research, Barcelona, July 2009*

Novel Protocol of Osteogenic differentiation from amniotic fluid cells
S. Tetè, F. Mastrangelo, M. Tranasi, V. Zizzari, I. Antonucci, G. D'Apolito,
T. Marchese, R. Vinci, L. Stuppia, E.F. Gherlone - *Atti del 7th Annual Meeting of ISSCR International Society of Stem Cell Research, Barcelona, July 2009*

Interfaccia osso - impianto nei differenti tipi di carico degli impianti dentali
S. Tetè, G. D'Apolito, F. Mastrangelo, R. Vinci, E.F. Gherlone - *Atti del III Expo di Autunno, Università della Lombardia, 27 - 28 Novembre 2009*

Valutazione della capacità osteogenetica di hafscs ottenute da liquido amniotico - S. Tetè, U. Di Tore, V. Zizzari, L. Stuppia, F. Zarone, E.F. Gherlone - *Atti del III Expo di Autunno, Università della Lombardia, 27 - 28 Novembre 2009*



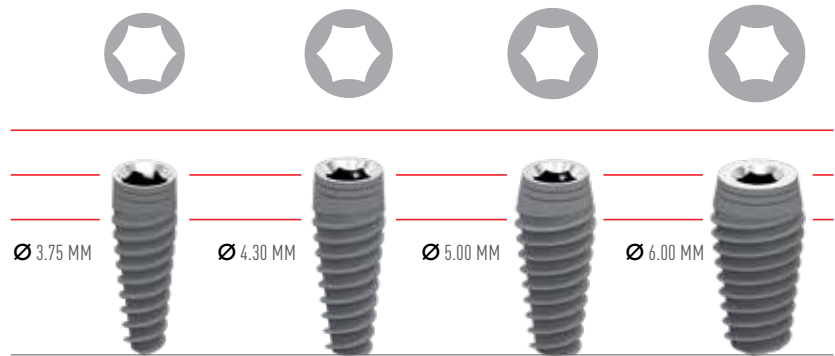
GLOBALWIN

IMPLANT SYSTEM

GLOBALWIN IMPLANTS THE MOST ADAPTABLE IMPLANTS YET

4 IMPLANT DIAMETERS A SINGLE PROSTHETIC CONNECTION.

Sharing the same prosthetic connection broadens the choice for prosthetic restorations, for which the Platform Switching method can be easily applied.



Micro- and macro-morphology in perfect harmony

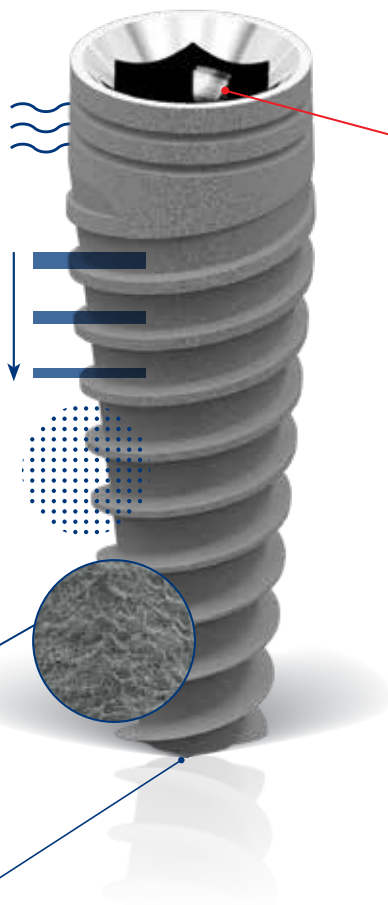
Neck with micro-grooves
to lighten stress at the crestal level.

Gradual depth spires
ensure maximum stability even with
immediate-loading techniques.

Truncated cone shape
with tapered apex, to facilitate insertion of
the implant and ensure maximum stability in
different bone types.

MRS Micro Rough Surface
sandblasted and etched, the gold standard of
osteoconductive surfaces.
Clinical follow-up since 2006.

Sharp apex
for easier implant insertion.



For all your prosthetics needs



Universal compatibility with internal hex
compatible with all major certified implant
systems on the market.
Self-centring for optimum fastening.

Prosthetic platform
available in all major CAD CAM libraries.

Innovative prosthetic solutions
adapted for digital processes.

GLOBALWIN IMPLANTS

Implant length	Ø 3.75	Ø 4.30	Ø 5.00	Ø 6.00
6 mm	-	GU430006MRS	GU500006MRS	GU600006MRS
8 mm	GU375008MRS	GU430008MRS	GU500008MRS	GU600008MRS
10 mm	GU375010MRS	GU430010MRS	GU500010MRS	GU600010MRS
11.5 mm	GU375115MRS	GU430115MRS	GU500115MRS	GU600115MRS
13 mm	GU375013MRS	GU430013MRS	GU500013MRS	GU600013MRS
15 mm	GU375015MRS	GU430015MRS	GU500015MRS	-
18 mm	GU375018MRS	GU430018MRS	-	-

Implant cover screw included

MAIN PROSTHETICS INSTRUMENTS AND ACCESSORIES

MANUAL SCREW TIGHTENER	CONTRA-ANGLE SCREWDRIVER	COVER SCREW	HEALING CAPS				IMPRESSION COPING FOR REPOSITIONING TECHNIQUE	
			Ø 4.00	Ø 5.00	Ø 6.00	Ø 7.50		
MTRS MTRM MTRL	HMTRS HMTRM HMTRL	CSC40 CSC60	HSC40003 HSC40005 HSC40007	HSC50003 HSC50005 HSC50007	HSC60003 HSC60005 HSC60007	HSC7503 HSC7505 HSC7507	ICS ICSR ICS75	
IMPRESSION COPING FOR PICK-UP TECHNIQUE	ANALOGUE	TEMPORARY ABUTMENTS	STRAIGHT STANDARD ABUTMENT	15° ANGLED STANDARD ABUTMENT	25° ANGLED STANDARD ABUTMENT			
ICP ICPF	ANG	TTA TTAR	SSA450020 SSA450040 SSA500020 SSA500040 SSA600020 SSA600040	SAA501520 SAA501540	SAA502520 SAA502540			
STRAIGHT AESTHETIC ABUTMENT	15° ANGLED AESTHETIC ABUTMENT	25° ANGLED AESTHETIC ABUTMENT	ABUTMENTS FOR KNIFE-EDGE TECHNIQUE					
ASA450020 ASA450040 ASA500020 ASA500040 ASA600020 ASA600040	AAA501515 AAA501530	AAA502515 AAA502530	SAF40 SAF50 SAF60 SAF40R SAF50R					
CASTABLE AND CAST-ON ABUTMENTS			OVERDENTURES	TRUMPET ABUTMENTS				
CSA40 CSA40R	OCA40 OCA40R	CrA40 CrA40R	BLT4015 BLT4030 BLT4050	TRU03 TRU03R				
PERFORMING ABUTMENTS	DIGITAL PROSTHESIS	BASE ABUTMENT	PRE-FORMED ABUTMENT					
PRA0015 PRA0025 PRA0030 PRA1725 PRA1735 PRA3025 PRA3035	ICD ICDPRA	BSA4015 BSA4030 BSA4015R BSA4030R	PMA10 PMA10CR PMA14 PMA14CR					

SPECIALIST COMPANY

ITALIAN ENGINEERING, TECHNOLOGY AND RESEARCH IN DENTISTRY

GLOBALWIN is the result of years of experience and expertise from BIOSAFIN, an Italian company that in the past 15 years has firmly established itself in the dental implant market, becoming a key player in the industry.

It has always been BIOSAFIN's policy to strive for quality and professional ethics where both dentists and patients are concerned, as well as professionalism and accountability to its partners.

Our manufacturing processes and business management are certified and subject to ongoing review, in order to maintain a high standard of manufacturing and the highest level of service provision.

TRADEMARKS

- GLOBALWIN®
- MRS Micro Rough Surface®

PATENTS REGISTERED

- Trumpet abutment: patent no. EP 3424460
- CAB - Clip Abutment Bar:
European Patent 114 250327
International Patent PCT/EP2011/072448

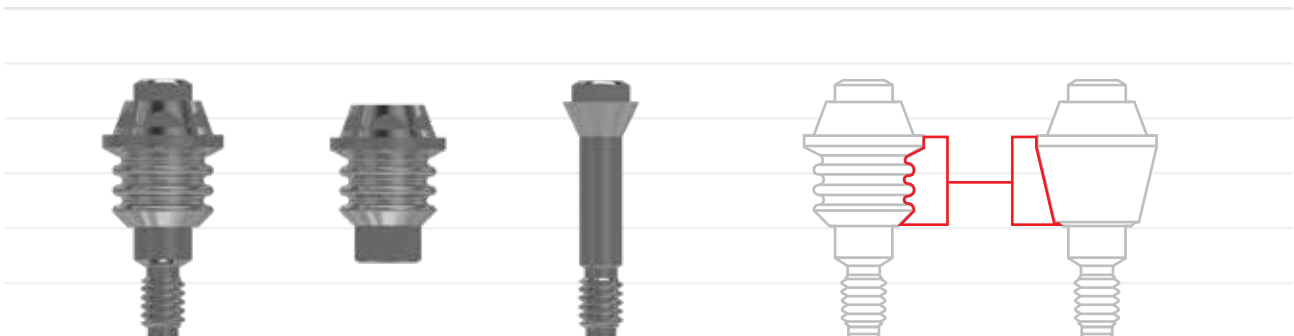


TRUMPET PATENTED ABUTMENT

The PATENTED ABUTMENT that expands the surface available to soft tissue, promoting the creation of an ideal bacterial seal.

The **Trumpet Abutment** has been specifically designed to ensure an ideal antibacterial seal. The attachment of soft tissues to the neck of the abutment follows the articulated line, creating the ideal conditions to provide the following benefits:

- creates the preconditions for a greater respect of biological width
- increases the possibility of platform switching
- allows the deeper insertion of the implant, extending the portion of the soft tissue available
- creates an ideal epithelial seal thanks to the positioning of the one-step abutment
- promotes the proliferation of hemidesmosomes, which are responsible for cell adhesion to the surface of the transmucosal collar
- all of which promotes an ideal bacterial seal, and guarantees successful long-term prosthetic rehabilitation



FOR COMPLETE AND STABLE REHABILITATION IN EDENTULOUS JAWS

CAB – *Clip Abutment Bar* – is the patented device which allows the solidification of 4 implants placed in the jaw with the Just on 4 Technique.

It is used to build a passive titanium structure, in the shortest time, in the context of immediate loading. The CAB reinforces the temporary restoration, significantly reducing the risk of fracture.

PRODUCED BY:

BIOSAF IN srl

info@biosafin.com

www.biosafin.com

OFFICES IN ITALY:

MILAN

Via Cagliari 32/44

20060 – Trezzano Rosa (MI)

Zona Industriale

Tel. +39 02 90968692

Fax +39 02 90968541

ANCONA:

Via Tiraboschi, 36/G

60131 – Ancona (AN)

Tel. +39 071 2071897

Fax +39 071 203261



GLOBALWIN Medical devices are compliant with EC Directive 93/42 as amended

www.globalwin.eu

COD. 19 Z/ITA/XI - 2021

SELECT BIBLIOGRAPHY:

Implant prosthetic rehabilitation in HIV-positive patients: a comparison of two different implant surface roughness

M. C. Francia, S. Galli, F. Bova, S. Ferrari Parabita, P. Capparé, E. F. Gherlone
Journal of Osseointegration 2017; 9(1): 27

Combined microcomputer tomography, biomechanical and histomorphometric analysis of the peri-implant bone: a pilot study in minipig model

M. Gramanzini, S. Gargiulo, F. Zarone, R. Megna, A. Apicella, R. Aversa, M. Salvatore, M. Mancini, R. Sorrentino, A. Brunetti
Dental Materials 32 (2016) 794-806

NEWSLETTER BIOSAF IN: JUST ON 4: 4 ANNI DOPO: GENNAIO 2011 – APRIL 2015

Autori: Unità Operativa di Odontoiatria - Università Vita - Salute San Raffaele di Milano, dir. Prof. Enrico Gherlone

Edentulous patients rehabilitated according to the "all-on-four" procedure with prefabricated bar system

P. Capparé, M. Pasi, G. L. Di Domenico, L. Cisternino, E. Polizzi, R. Crespi - Department of Dentistry, IRCCS San Raffaele Hospital, Milan, Italy - Dental School, Vita-Salute University, Milan, Italy Minerva Stomatologica 2015; 64 (Suppl.1 al No2): 81

Crestal bone remodeling around platform switched, immediately loaded implants placed in sites of previous failures

A. Quaranta, A. Cicconetti, L. Battaglia, M. Piemontese, G. Pompa, I. Vozza
European Journal of Inflammation Vol.10 N°2 Accepted July 30 2012

Isolamento di progenitori osteogenici provenienti da liquido amniotico utilizzando un protocollo di coltura cellulare single step

S. Tetè, I. Antonucci, G. D'Apolito, U. Di Tore, V. Zizzari, A. De Carlo, M. Tumeddei, L. Stuppia, E. Gherlone
Doctor Os, supplemento maggio 2011 - XXII (5)

"Isolation of osteogenic progenitors from human amniotic fluid using a single step culture protocol"

I. Antonucci, I. Iezzi, E. Morizio, F. Mastrangelo, A. Pantalone, M. Mattioli Belmonte, A. Gigante, V. Salini, G. Calabrese, S. Tetè, G. Palka, L. Stuppia
SILENCE a Journal of RNA regulation, 2009

"In vitro behaviour onto different titanium surface of osteoblast-like cells obtained from human dental pulp"

S. Tetè, F. Mastrangelo, V. Zizzari, G. D'Apolito, N. Fiorentino, U. Desiato, M.T. Sberna, R. Quaresima, L. Stuppia, R. Vinci, E. F. Gherlone
Atti del 7th Annual Meeting of ISSCR Int. Society of Stem Cell Research, Barcellona July 2009

"Novel Protocol of osteogenic differentiation from amniotic fluid cells"

S. Tetè, F. Mastrangelo, M. Tranasi, V. Zizzari, I. Antonucci, G. D'Apolito, T. Marchese, R. Vinci, L. Stuppia, E. F. Gherlone
Atti del 7th Annual Meeting of ISSCR Int. Society of Stem Cell Research, Barcellona July 2009

"Interfaccia osso-implianto nei differenti tipi di carico degli impianti dentali"

S. Tetè, G. D'Apolito, F. Mastrangelo, R. Vinci, E. F. Gherlone
Atti III Expo di Autunno Università della Lombardia, 27-28 Novembre 2009

"Valutazione della capacità osteogenica di hafscs ottenute da liquido amniotico"

S. Tetè, U. Di Tore, V. Zizzari, L. Stuppia, F. Zarone, E. F. Gherlone
Atti III Expo di Autunno Università della Lombardia, 27-28 Novembre 2009

"In vitro evaluation of osteoblast-like cells from different sources"

F. Mastrangelo, M. Tranasi, V. Zizzari, D. Farronato, T. Traini, R. F. Grassi, L. Stuppia, S. Tetè
Atti del 86th General Session of International Association of Dental Research (I.A.D.R.) Toronto, 2-5 Giugno 2008

"A macro-and nanostructure evaluation of a Novel Dental Implant"

S. Tetè, F. Mastrangelo, T. Traini, R. Vinci, G. Sammartino, G. Marenzi, E. F. Gherlone
Implant Dentistry vol.17n.3 2008

"Valutazione del comportamento di osteoblasti derivanti da cellule staminali di liquido amniotico su differenti superfici implantari"

A. Desiderio, A. D'Incecco, L. Stuppia, I. Antonucci, S. Tetè
Atti I Expo di Autunno Università della Lombardia, 1 Dicembre 2007

"Evaluation of surface nano-topographic effect on afscells growth"

A. Desiderio, F. Mastrangelo, T. Traini, L. Stuppia, G. Sammartino, S. Tetè
Atti dell'Annual Meeting del I.A.D.R. International Association of Dental Research, Continental Division Thessaloniki 26-29 Settembre 2007

Impianto troncoconico con componente protesica sottodimensionata per mantenere l'osso crestale

L. Prosper, S. Redaelli, A. D'Addona, E. F. Gherlone
Poster 13° Congresso Nazionale del Collegio dei Docenti di Odontoiatria - Roma 5-8 Aprile 2006

Four-year follow-up of larger diameter implants placed in fresh extraction sockets using a resorbable membrane or a resorbable alloplastic material

JOMI The L. Prosper, E. F. Gherlone, S. Redaelli, M. Quaranta
JOMI The International Journal of Oral & Maxillofacial Implants 2003; vol.18 - n.6

Analysis of 435 screw-vent dental implants placed in 161 patients: software enhancement of clinical evaluation

Arlin ML.
Implant Dent. 2002; 11 (1): 58-66

"Osteointegrazione a 5 anni di impianti sabbati o sabbati e mordenzati ritenenti protesi parziali fisse"

L. Prosper, F. Di Carlo, I. Vozza, M. Quaranta
OI Quintessence International I - 2002

"Clinical trial on osseointegration using sandblasted and acidetched implants"

S. Redaelli, L. Prosper, F. Di Carlo, A. Daddona, M. Quaranta - 2001

"Healing period of titanium implants with sandblasted and acid-etched surface"

L. Prosper, F. Di Carlo, S. Redaelli, R. Scaringi, M. Quaranta
3° World Congress of Osteointegration 2001

"Tempo di guarigione ossea per impianti di titanio con superficie sabbata o superficie sabbata e mordenzata"

L. Prosper, F. Di Carlo, S. Redaelli, G. Radaelli, R. Scaringi, M. Quaranta
La rivista Internazionale di Odontoiatria Protesica, vol.13 n. 1 - 2000

"Analisi in vivo su tre superfici implantari: valutazione istomorfometrica"

S. Redaelli, L. Prosper, F. Di Carlo, A. Scarano, I. Vozza - anno 2000

BIOSAFIN

Partner of



Making Your Life Better.

The company BIOSAF IN is certified to:

UNI EN ISO 9001 which certifies the entire workflow across the board, guaranteeing compliance with the quality standards considered to be optimum for the protection of the product user – the professional – and the end user – the patient.

UNI CEI EN ISO 13485 is specifically relevant to the Quality of Medical Devices.